

TUNNELS • MINING • OIL & GAS • MARITIME • DEFENCE • INDUSTRIAL • COMMERCIAL

BURNDY

Cable Support Systems®

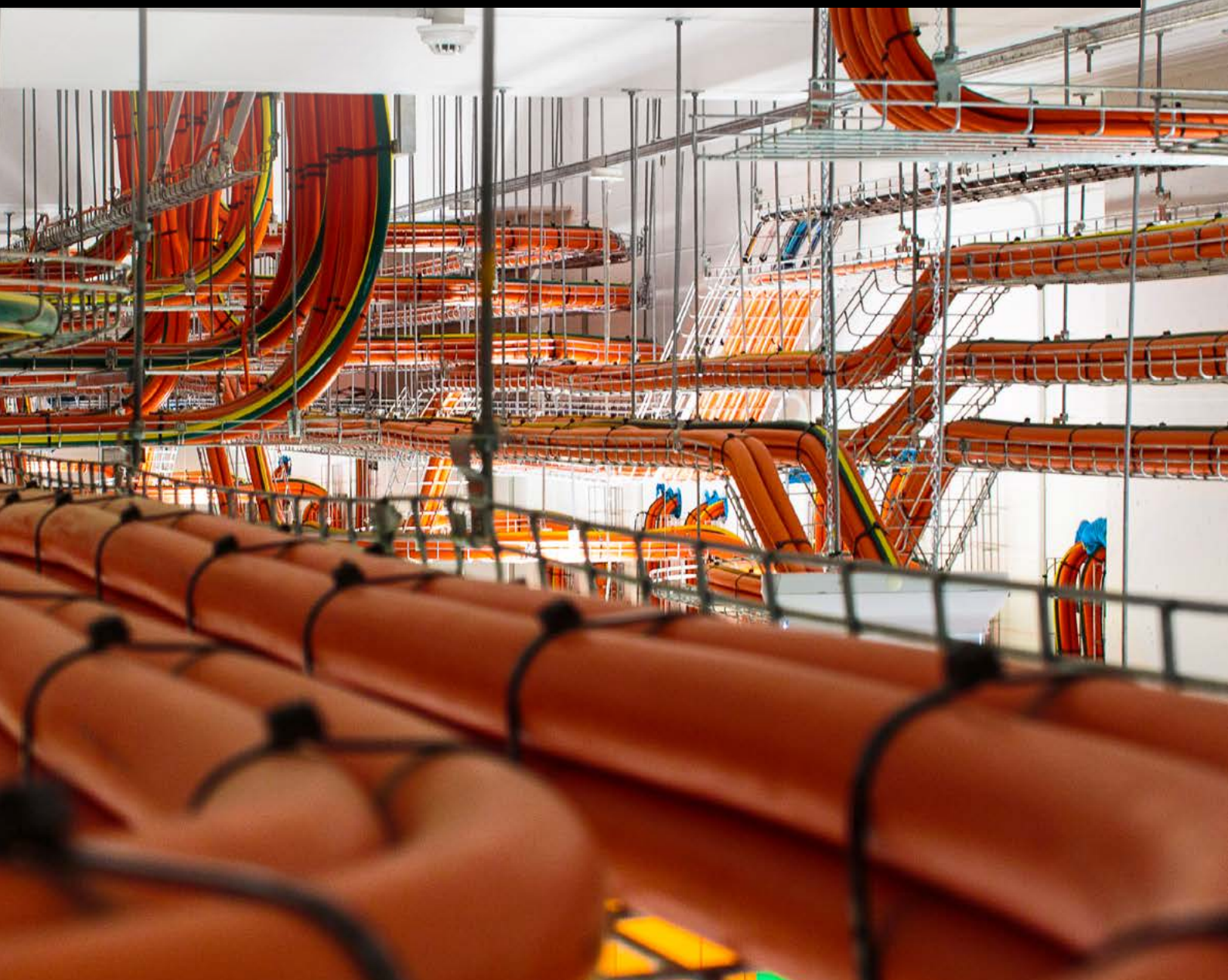
**Agile performance...
generation after generation.**



PHOENIX METALFORM
METAL MADE EASY

HISTORY IN THE MAKING

For almost 100 years, the name BURNDY® has been associated with innovation and design excellence in electrical cable distribution. Until 1924, all cable joins were soldered or welded. American engineer, Dr Bern Dibner, changed all that with a revolutionary new method for joining and terminating heavy electrical conductors.



Today, it is hard to imagine how difficult it would be to complete cabling projects without such an elegant solution to the problem. All it needed was a soft metal terminal that could be uniformly joined under pressure to the cable; but like so many great ideas in engineering, the impact was far reaching.

The Burndy Engineering Company was established in 1924, with the Australian business being incorporated in 1971. Dr Dibner guided the growth of BURNDY® until his retirement as Chairman in 1972. The company remained family owned until it went public in 1956; and was acquired by French corporation, Framatome Connectors International (FCI), in 1988.

As part of FCI's global restructuring, the Phoenix Steel group acquired the Australian operation in 2004. What followed was a refocussing of the business. Burndy Cable Support Systems® continues to apply Dr Dibner's approach to innovation in engineering, fabrication and logistics. Our company is inspired by his commitment to excellence, driven by a strong management team that both owns and works in the business.

Australian owned and operated, Burndy Cable Support Systems® is a member of the Phoenix Steel group of companies, which also includes Phoenix Metalform, Phoenix Decorative Metals and SPLIT SET® Mining Systems. Established in 1981, the synergies of the three divisions offer a unique balance of innovative design solutions for Metal Fabrication, Mining Ground Support and Cable Support Systems. Our specialist engineering capability covers metal fabrication, seismic supports and Cable Support Systems.



*Photo
Legacy Way Project*

DESIGN SERVICES/SUPPORT

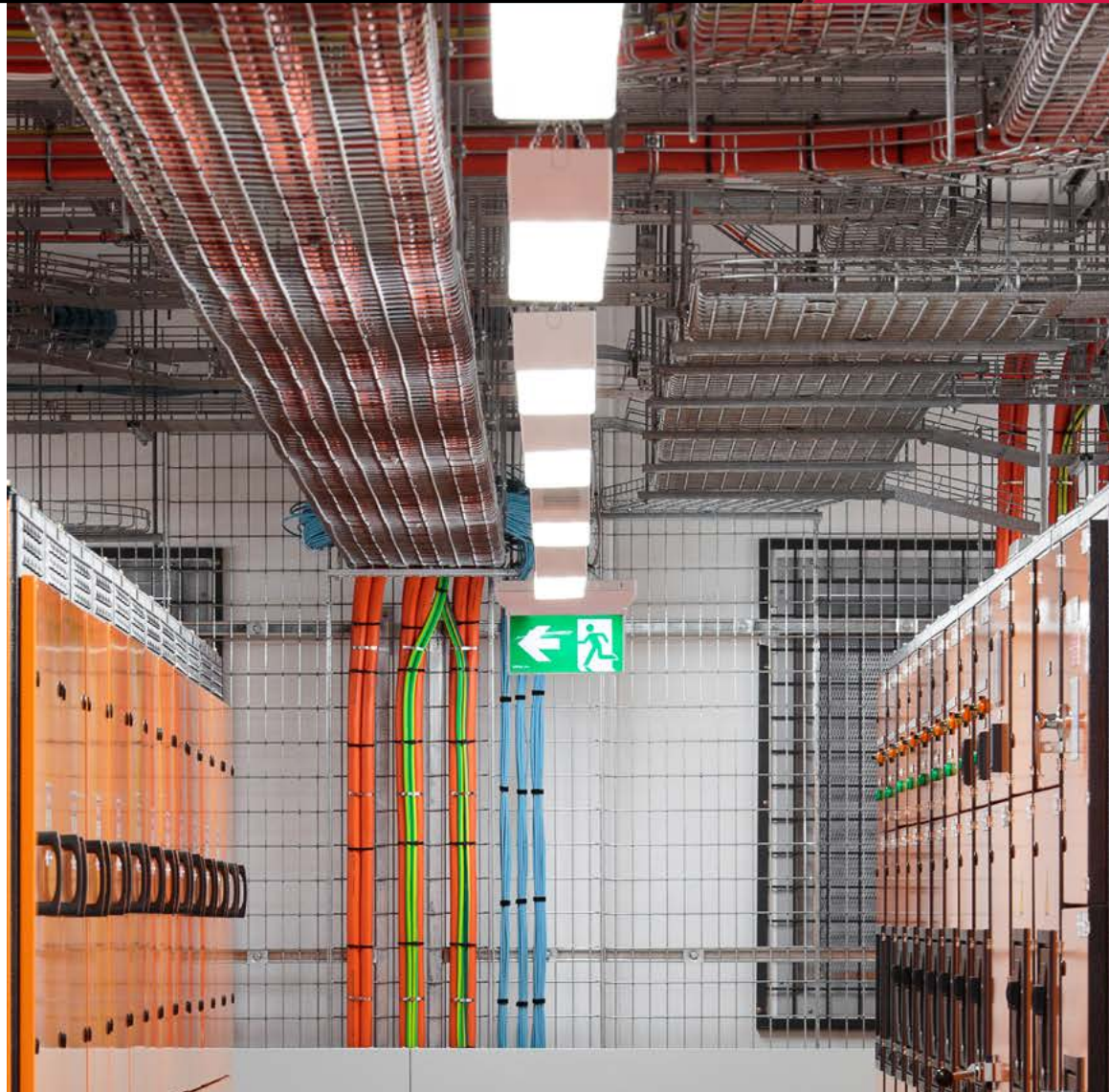
The key members of our engineering team have more than 100 years combined design experience in the cable support industry. They ensure optimum design, quality and reliability, delivering innovative and economical solutions – systems designed to last a lifetime.

What differentiates us from our competitors is our consistent attention to our customers' needs. Quick to respond, our team delivers the highest standards of excellence in every phase of design, fabrication and delivery.

Burndy Cable Support Systems® has the capacity to deliver projects of any size from our manufacturing sites in Perth, Brisbane and Townsville, with support from branches and distribution centres across Australia.

There is a heavy focus on complying with all relevant standards in everything we do. Our business quality management system is certified to ISO9001:2015, and Occupational Health and Safety certified to AS/NZS 4801:2001 and OHSAS 18001:2007.





- » Custom design of products and systems to resolve your engineering requirements.
- » Fire rated systems that conform to the AS/NZS 3013:2005 classification for WS5X (two-hour fire rating at 1050 C).
- » Seismic restraints that conform to AS 1170.4-2007.
- » Wind loading standards that conform to AS/NZS 1170.2:2011, AS/NZS 1170.1:2002, AS/NZS 1170.0:2002 and AS 4100-1998.

- » Systems that are precision tested and quality assured.
- » Consulting services available during design, construction and testing.
- » Burndy Cable Support Systems® engineers who can model designs in house and can run simulations and Finite Element Analysis (FEA).

Burndy Cable Support Systems® has established a solid reputation for helping our clients develop smarter and more cost-effective solutions that reduce the cost of materials and the time to install.

Photo right
Canberra Data Centres
– Fyshwick

OUR PROJECTS

WEST CONNEX M4 EAST ROAD TUNNEL

WestConnex is the largest transport and urban renewal project in Australia and is a critical part of the NSW Government's integrated transport solution. This stage includes 16 km of new tunnels between Homebush and Kingsgrove, passing under Haberfield, St Peters and other inner west suburbs. The first of the tunnels – the M4 East – opened to traffic in July 2019.

Our contribution: Design and supply 35 km of fire rated, seismic and wind rated custom floor mounted cable ladder support system.

» 80 custom designed arrangements

LEGACY WAY ROAD TUNNEL

The M5 Legacy Way is a 4.6km tunnel linking the Western Freeway at Toowong and the Clem7 and AirportLink M7 assets at Kelvin Grove. The two bored tunnels, carrying two motorway grade lanes in each direction, opened in June 2015. After decades of traffic congestion in Brisbane's inner west, this project carries approximately 20,000 vehicles a day and has reduced travel time between the Centenary Bridge and the Inner City Bypass by 71%.

Our contribution: Design and supply 24 kms Fire rated custom cable ladder support system.

» 50 custom designed arrangements

ST HELENA TUNNEL

Located about 5 km west of Byron Bay, St Helena tunnel is the centrepiece of the Pacific Highway T2E upgrade from Tintenbar to Ewingsdale. It was built to avoid the steep grades of the previous alignment over St Helena Hill, and the associated heavy truck noise and pollution. At its deepest point, the twin tunnels run 45 m below the ridge line of St Helena Hill for a distance of 434 metres. Opened in December 2015, the tunnel was built as part of a realignment of the main highway between Brisbane and Sydney. There are two northbound traffic lanes and three southbound lanes, due to the gradient of the highway at this point. There is also a bicycle/pedestrian lane in each tunnel.

Our contribution: Design and supply fire rated, seismic cable support system, incorporating:

- » 7 km fire rated powder coated ladders
- » 7 km fire rated custom swivel/hanger brackets
- » Custom seismic support brackets

CBD AND SOUTH EAST LIGHT RAIL

The CBD and South East Light Rail is a new network connecting 12 km of track from Circular Quay to Randwick and a branch line to Kingsford. Construction commenced in October 2015, with services between Circular Quay and Randwick commencing in December 2019 and to Kingsford in April 2020.

Our contribution: Design and supply fire rated, seismic cable support system for the Moore Park Rail Tunnel, incorporating:

- » 3 km fire rated cable ladder
- » 3 km custom cover
- » 4,000 fire rated cantilever brackets
- » 900 custom PFC support brackets

Photo
St Helena Tunnel

OTHER
PROJECTS





Iron Ore

BHP Yarrie, FMG Cloud Break, Rio Tinto Koodaideri, BHP Nelson point

Gold Mining

Bronzewing, Goldfields, Minjar Gold, Cadia Gold Mine

Coal Mining

Byerwen Coal

Oil & Gas

BHP Kwinana refinery

Metal Processing

Sunmetals Townsville, Glencore Mines

Maritime (Austal)

Coastal border patrol vessels (Navy), ferries, luxury yachts

Data Centres

NEXT DC S2 and CDC HUME 4

Commercial

Barrangaroo Towers, Prince of Wales Hospital, Concorde Hospital and Wellington Correctional Centre and Nudgee College, ALDI Solar

Civil Works

Wellington Solar Farm, Nambucca Bridge re-alignment, Luggage Point Wastewater Treatment Plant, Wharf 2 Gladstone Port Authority

Rail

Central Station and Wynyard Station upgrades

Photo left

The Barrangaroo skyline showing the International Towers (February 2016). Original photo Daniel James. Licensed under the Creative Commons Attribution 2.0 Generic license.

SYSTEMS AND COMPONENTS

Burndy Cable Support Systems® offers a complete range of cable support products in various sizes and finishes, including:

- » Anchors
- » Channel & Strut Systems
- » Cable Tray & Accessories
- » Cable Mesh
- » Cable Ladder & Accessories
- » Fire Rated Cable Support Systems
- » Nuts Bolts Fasteners & Accessories
- » Hyground Products
- » Mechanical Anchors
- » Cable Duct
- » Cantilever Brackets
- » Covers
- » Ladder Tray
- » Flexible & Rigid Hanging Systems
- » Seismic rated cable support systems



Wholly Australian
owned & operated

Note:

Channels can be finished in black (untreated), pre-galvanised, hot dip galvanised, stainless steel, fibreglass, powder coated and custom specialty finishes.

Fasteners, Anchors, Nuts & Bolts are available in zinc plated, hot dipped galvanised and stainless steel.

Cantilever brackets and channel fittings can be finished in hot-dip galvanised, stainless steel, powder coating. Special finishes are available on request.

Ladder trays and wire mesh cable trays are available with a family of compatible accessories.

Cable Ladders can be finished in black untreated, hot dipped galvanised, powder coated, also available in stainless steel and aluminium.

Cable Mesh, Cable Duct & Cable Tray can be finished in black untreated, pregalvanised, hot dipped galvanised, powdercoated, also available in stainless steel and aluminium.

Hyground compression grounding system connectors are manufactured from pure wrought copper extrusions. They have a current carrying capacity greater than or equivalent to the conductor.

*Photo background
Canberra Data Centre
– Fyshwick*

CONTACT BURNDY

CABLE SUPPORT SYSTEMS®



1300 BURNDY (1300 287 639)
1300 FAX NOW (1300 329 669)

HEAD OFFICE – PERTH

91–93 McDowell Street, Welshpool WA 6106
Phone 08 9458 1188
Fax 08 9458 1182
@ burndy.wa@burndycss.com.au

BRISBANE

161 Jackson Road, Sunnybank Hills QLD 4109
Phone 07 3219 6108
Fax 07 3219 6208
@ burndy.qld@burndycss.com.au

TOWNSVILLE

75–81 Toll Street, Mount St John QLD 4818
Phone 1300 287 639
Fax 1300 329 669
@ burndy.qld@burndycss.com.au

SYDNEY

11 Sunblest Crescent, Mt Druitt NSW 2770
Phone 02 9832 3377
Fax 02 9832 0733
@ burndy.nsw@burndycss.com.au

HOBART

Gordon Wood & Co
31 Sunderland Street, Moonah TAS 7009
Phone 03 6273 4455
Fax 03 6273 4734
@ sales@gordonwood.net.au

Burndy Cable Support Systems® is a registered trademark of Phoenix Steel Sales Pty Ltd. SPLIT SET® is a registered trademark of Phoenix Steel Sales Pty Ltd. BURNDY® is a registered trademark of Hubbell Incorporated.

OTHER MEMBERS OF THE PHOENIX GROUP



WWW.PHOENIXMETAL.COM.AU

Phoenix Metalform is one of Australia's leading manufacturers of sheet metal building products including Stud Framing, Battens, Angles, Purlins, Core Trays, Perforated Metals, Street Furniture, Decorative Metal.

The company also provides general fabrication services to industry, producing steel and custom sheet metal products.



WWW.PHOENIXDECORATIVEMETALS.COM.AU

Phoenix Decorative Metals is a premier manufacturer of Decorative Metal products. With over 20 years experience in the field products include Decorative cladding, perforated metals,

privacy screens, balustrade, fencing infill panels, gates, appliance enclosures, metal art and shade structures. Custom designs are available to suit any project.



WWW.SPLITSET.COM.AU

SPLIT SET® MINING SYSTEMS manufactures, distributes and supports Ingersoll Rand Split Set Friction Rock Stabilisers and a complete range of ground support products, including Resin Bolts, Bearing Plates, Cable Bolts, Mine Mesh

and Core Storage Systems. The company offers ongoing technical support, as well as training for installers. With branch offices throughout Australia, SPLIT SET® is always available to support its customers.